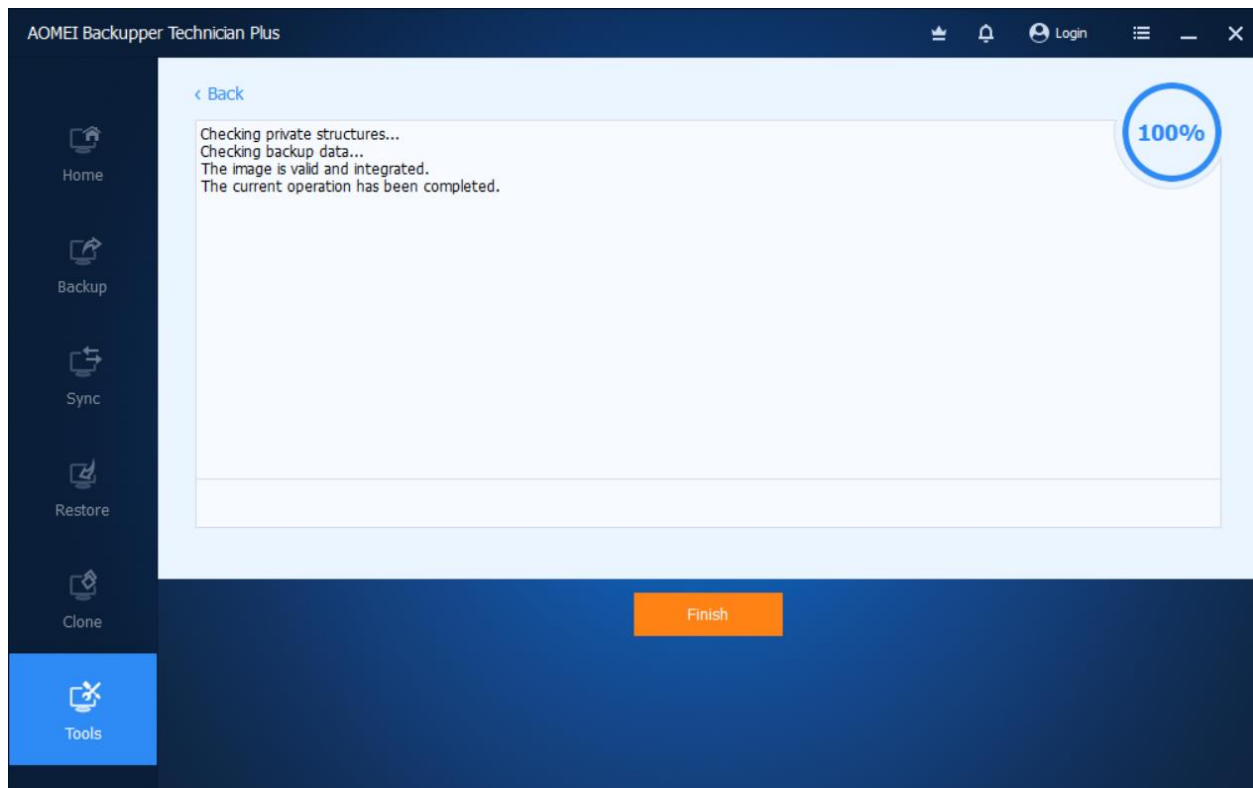
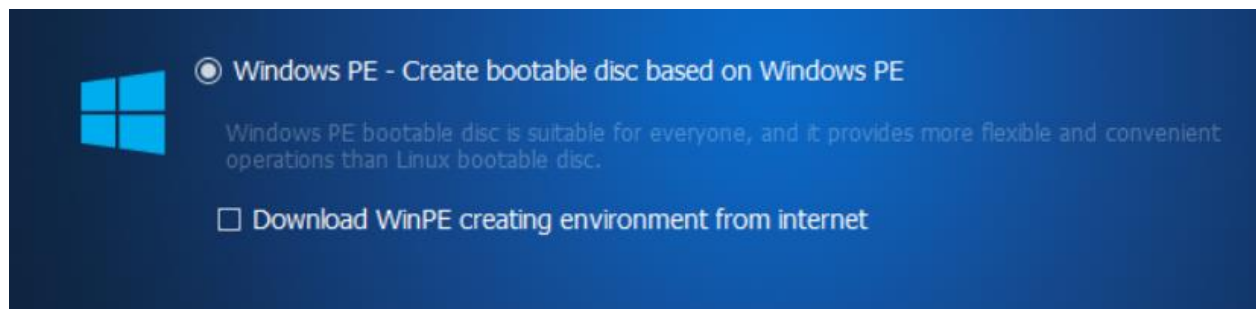


AOMEI *.adi to VM Conversion

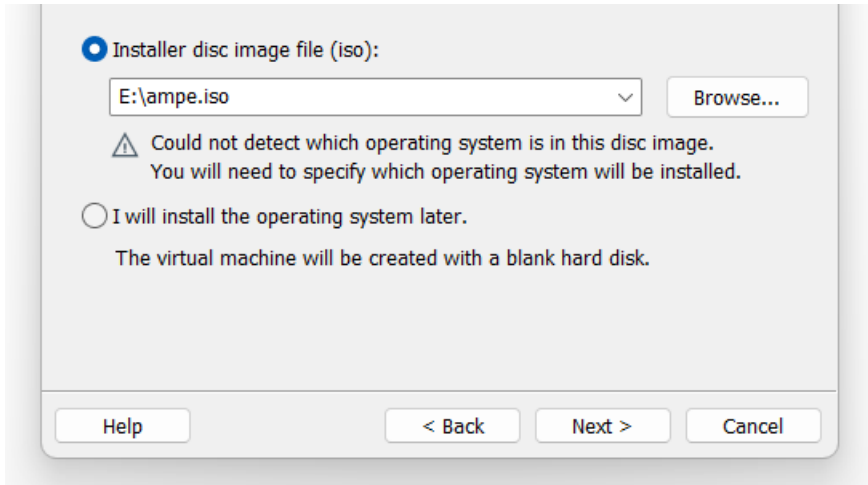
1. Validate the *.adi image file made of a physical system created by “System Backup” feature of aomei tech plus.
Tools → Check Image.



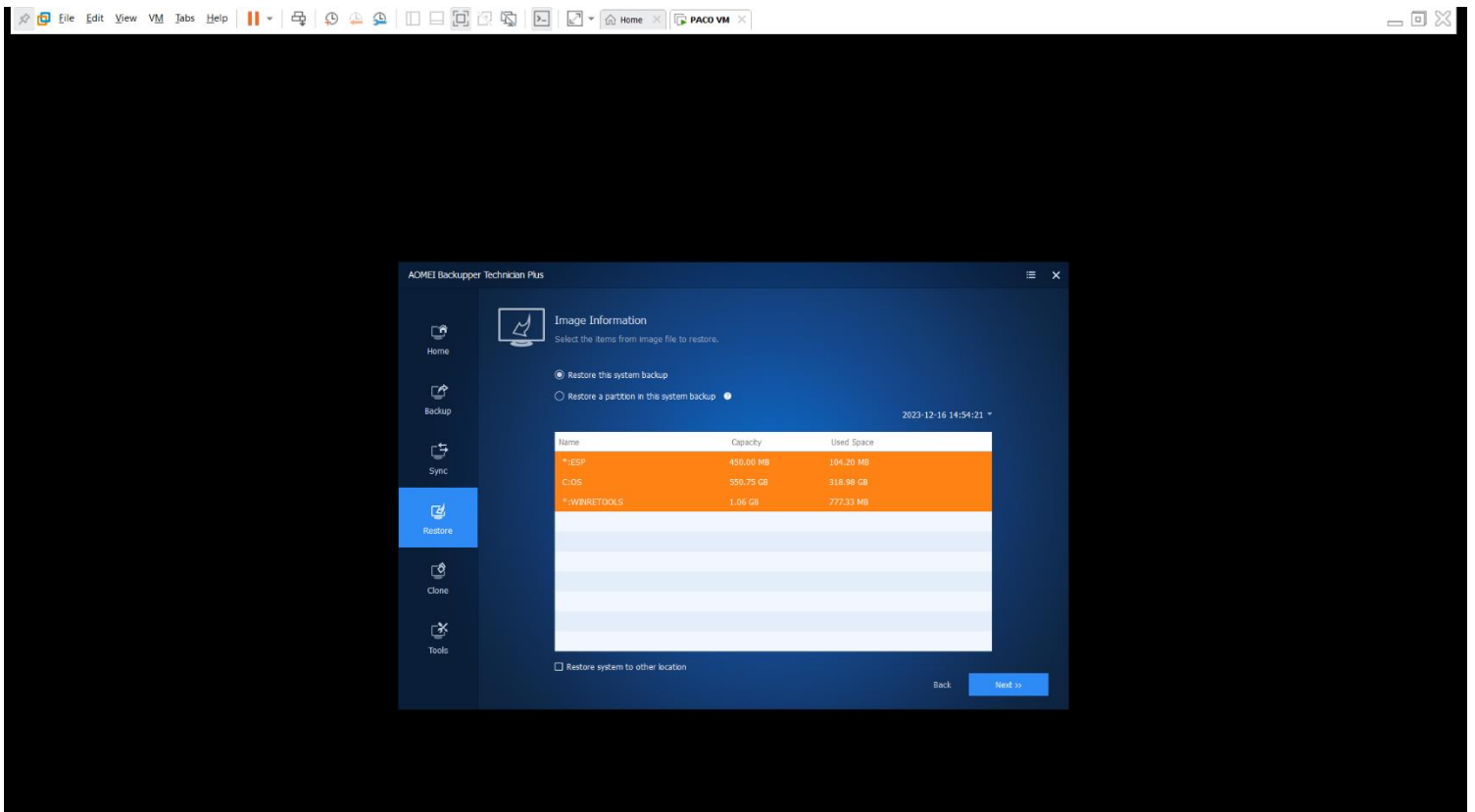
2. Create WINPE bootable iso media (ampe.iso). Tools → Create Bootable Media → WINPE → Export ISO file.



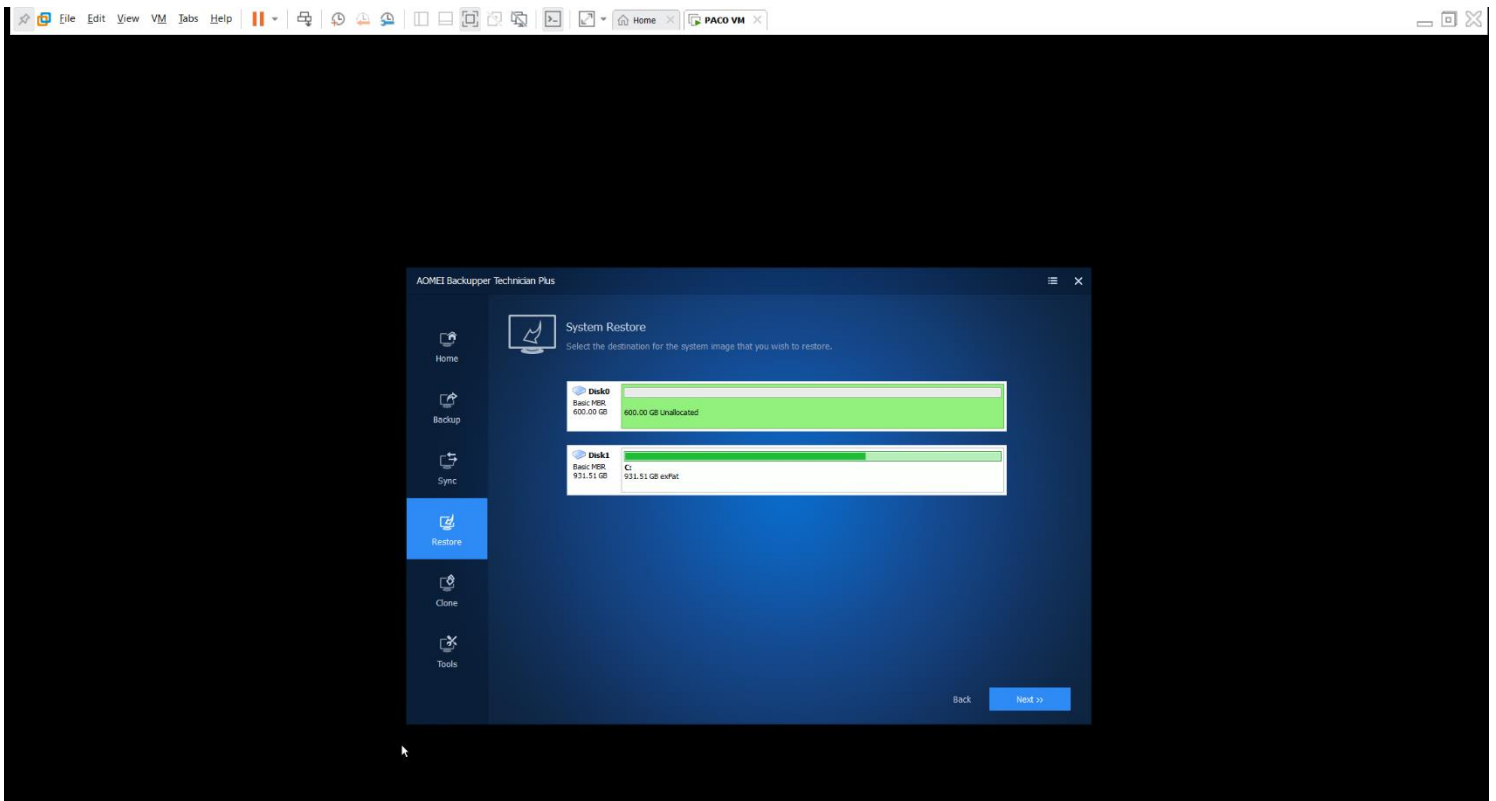
- Created a Typical VM with VM Workstation Pro v17. VM created with option of Guest OS installation as “Installer disc image (iso) and browsed for WINPE (ampe.iso) file created above. VM Guest OS (WIN11x64) same as in the image *.adi of actual physical system.



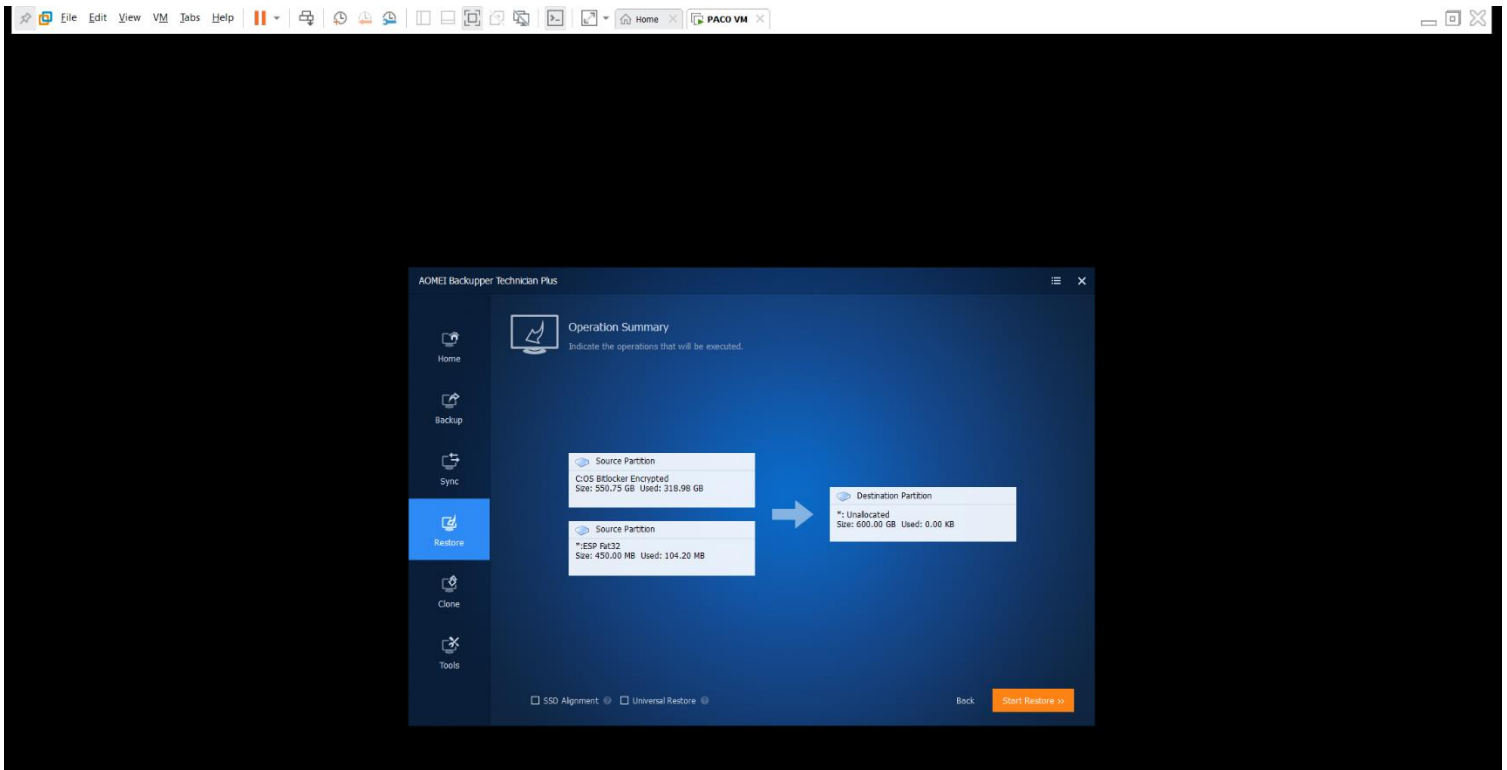
- Boot VM to WINPE iso file with aomei GUI. Restoration of *.adi image file to virtual HD *.vmdk created during creating VM.



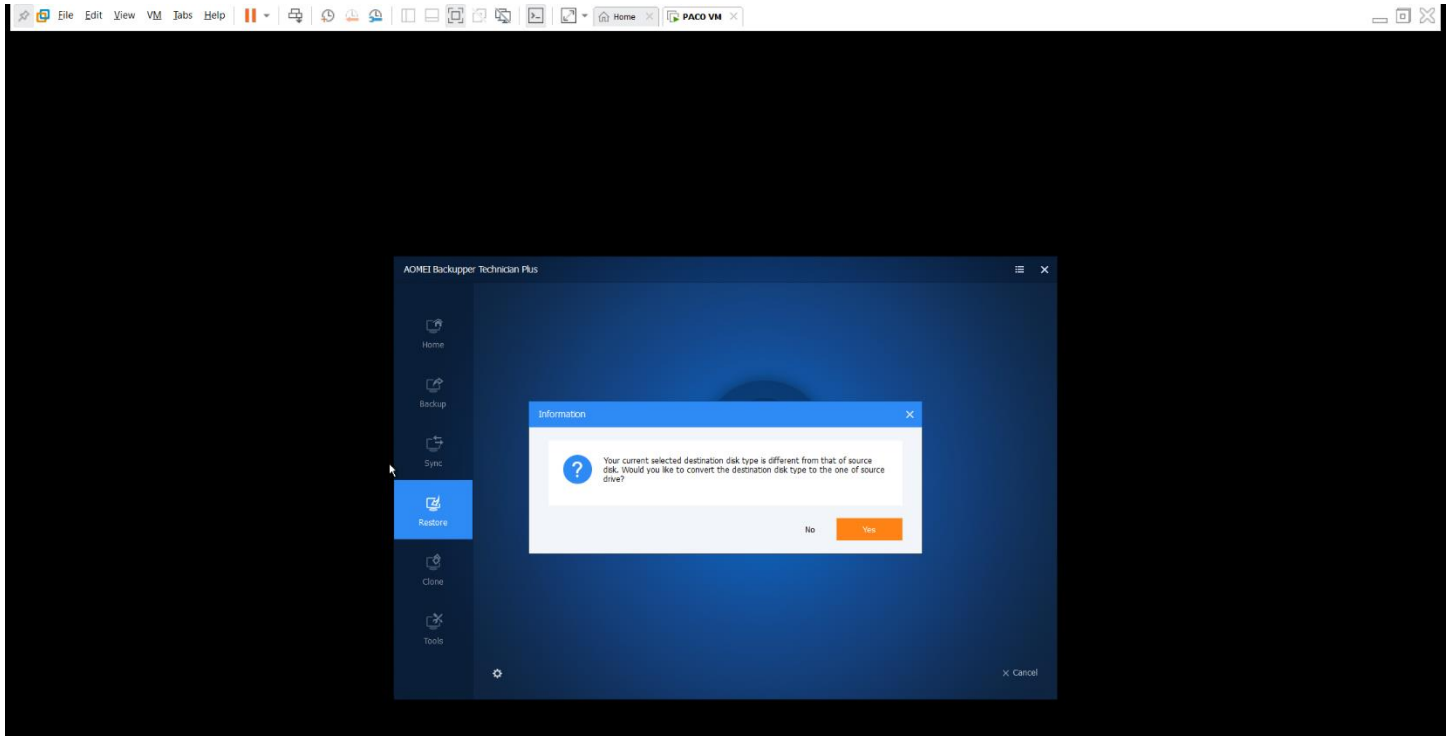
5. Selecting destination as Disk0 of VM drive (*.vmdk) for restoration of above system image files from *.adi. Disk1 is my USB SSD but WINPE picks it as C: drive. I hope that's not a problem.



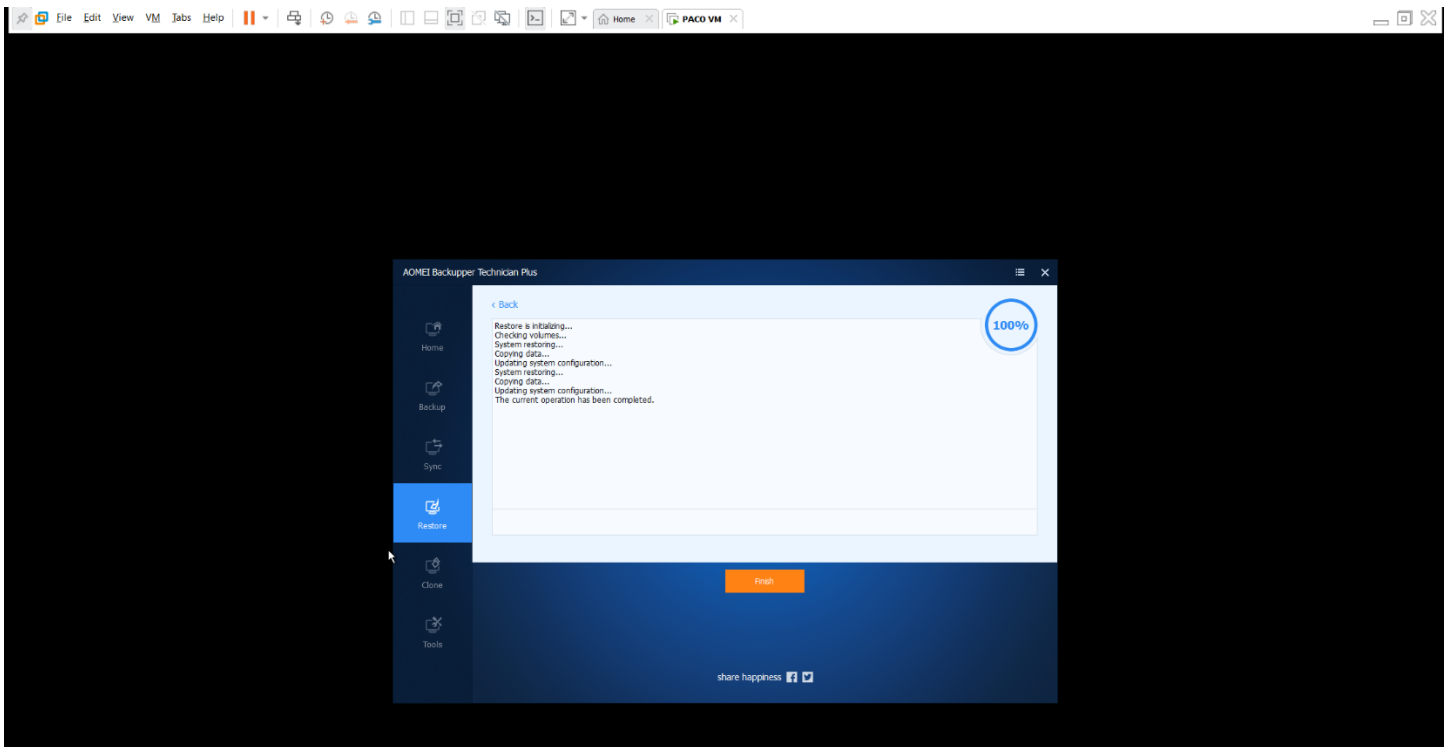
6. Operation Summary - can't see WINRE drive in summary below, but it was displayed in image information above item #4.



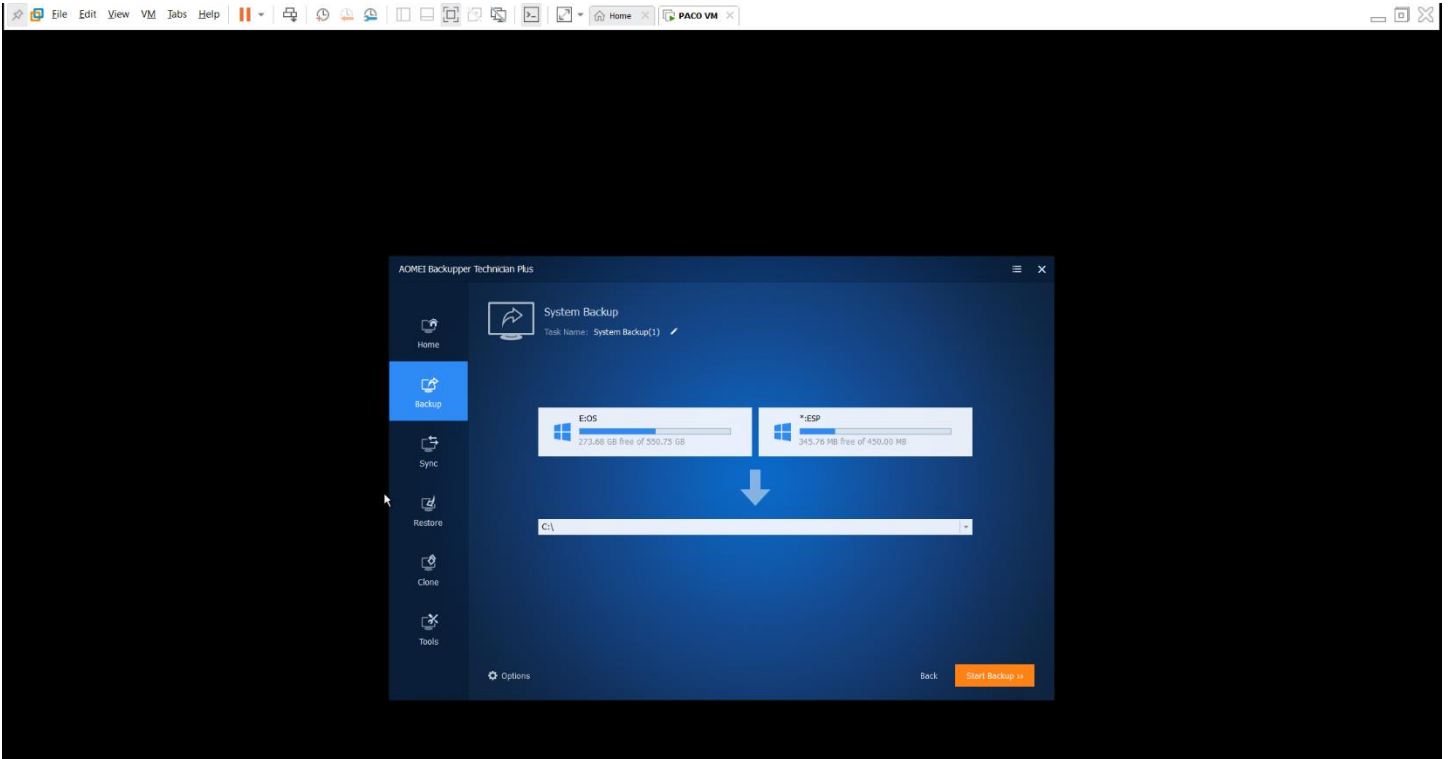
7. When "Start Restore" setup asked for VHD (*.vmdk) format conversion.



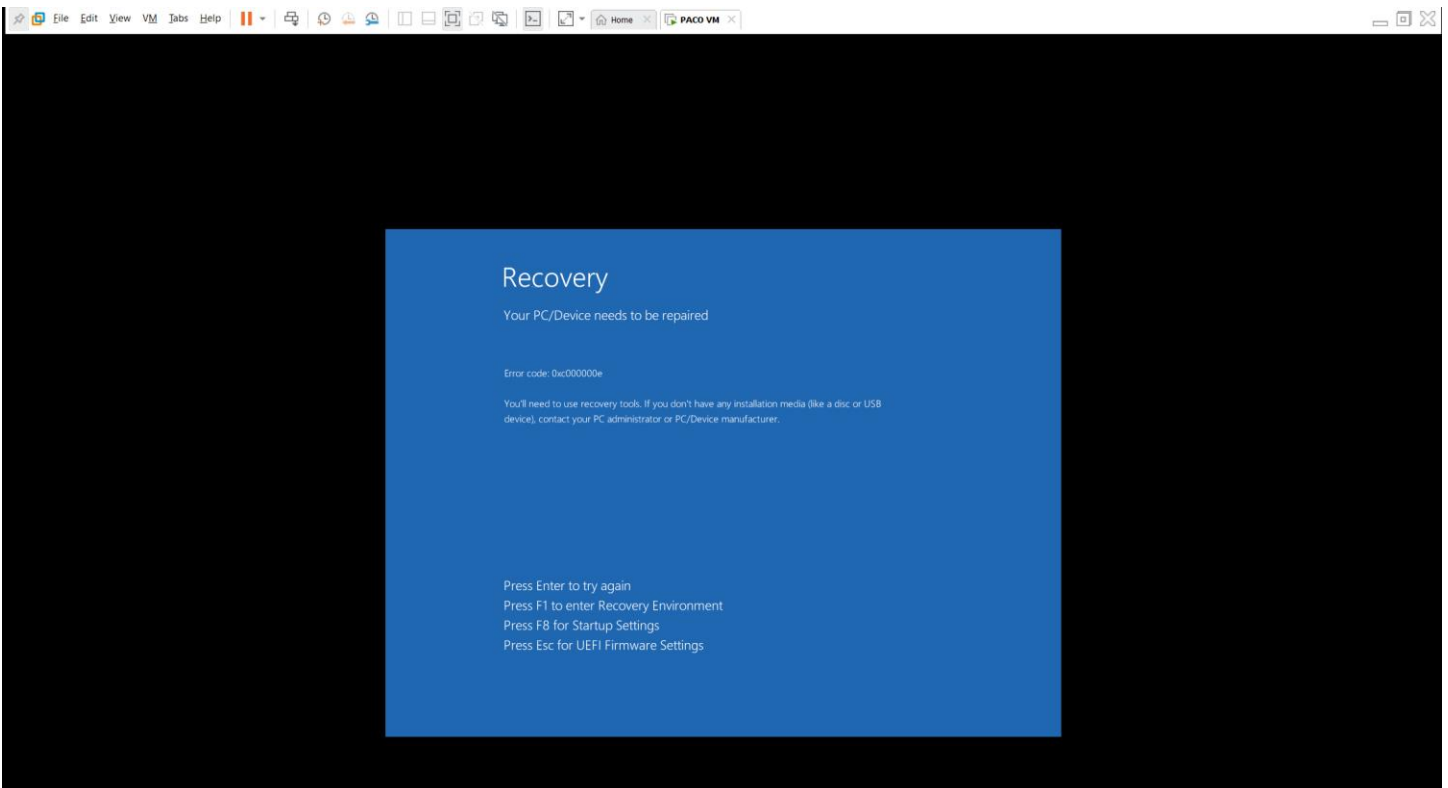
8. Restoration completed 100%.



9. Exploring VM with aomei before restarting VM and booting from restored image. Noticed that restored image has a drive letter E:, not C:. Not sure if this is a problem.



10. Booting VM from *.vmdk but failed. After first boot and below error I can't boot VM from WINPE (aomei) anymore.



- 11. Another attempt with this time taking process, but this time while exploring restored image (*.adi) as explained in item#9 above, found that drive letter of *.vmdk is C:, however ended up having same boot error.
- 12. Below is snapshot of VMware UEFI Firmware settings.

BIOS boot options

